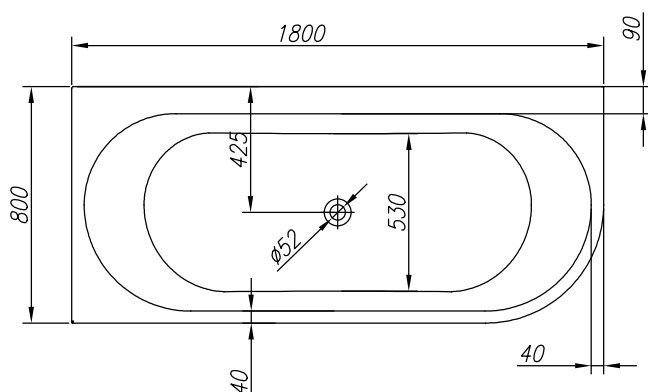
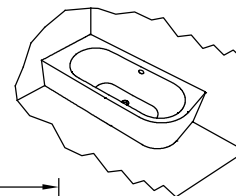
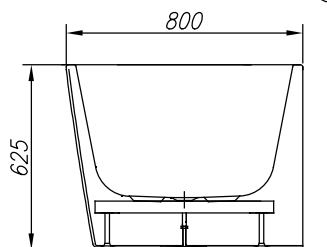
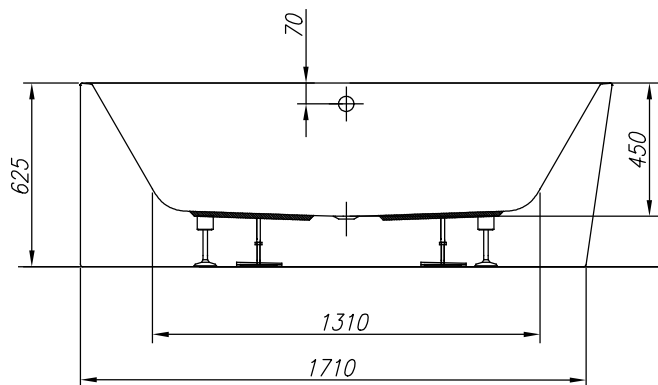


PREINSTALLATION  
VORINSTALLATION



VOLUME (l)  
VOLUMEN (l)

MAX. LOAD (kg)  
MAX. BELASTUNG (kg)

FLOOR LOAD (kg/m<sup>2</sup>)  
BODENBELASTUNG (kg/m<sup>2</sup>)

245

400

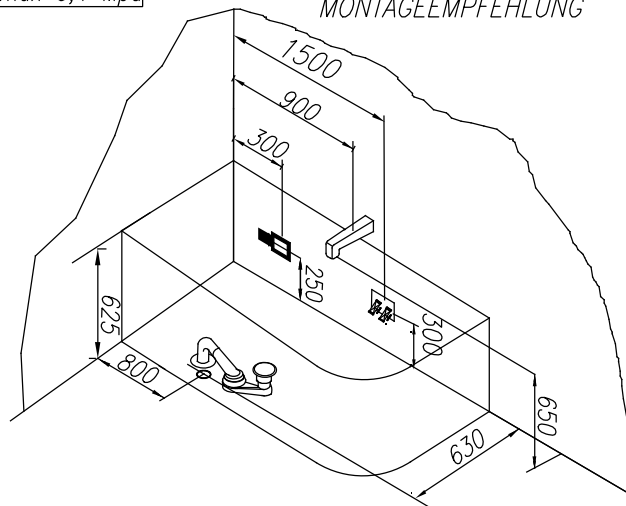
280


- - Spot for el. cable 3×2.5mm<sup>2</sup>, length approx. 1m
- - Platz Stromkabel 3 × 2,5 mm<sup>2</sup>, Länge cca. 1 m
- - Spot for el. cable 1×6mm<sup>2</sup> for earthing, length approx. 1.5m
- - Platz Stromkabel 1 × 6 mm<sup>2</sup> für Erdung, Länge cca. 1,5 m

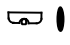
- ⊠ - Connection of hot and cold water 1/2" min 0.2Mpa, max 0.4Mpa
- ⊠ - Anschluss Warm- und Kaltwasser 1/2" min 0,2 Mpa, max 0,4 Mpa

- - Drain spot Ø 50mm
- - Abflussplatz Ø 50 mm


INSTALLATION RECOMMENDATION  
MONTAGEEMPFEHLUNG



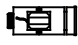
 - PUMP  
- WASSERPUMPE

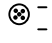
 - WATER JETS  
- WASSERDÜSEN

 - AIR CONTROLLER  
- LUFTREGLER

 - ELECTRONIC SWITCHES  
- ELEKTROSCHALTER


 - FIXTURE AND SHOWER HANDLE  
- WASSERHAHN UND DUSCHE

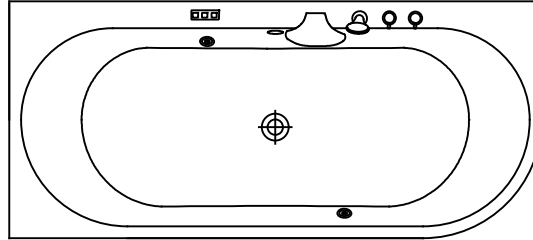
 - BLOWER  
- LUFTPUMPE

 - AIR JET  
- LUFTDÜSE

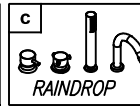
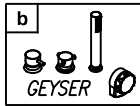
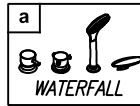
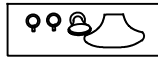
 - PNEUMATIC SWITCH  
- PNEUMATIKSCHALTER

 - LIGHT OR CHROMOTHERAPY  
- LICHT- ODER CHROMOTHERAPIE

 - MICROJET SWITCH  
- SCHALTER FÜR MIKRODÜSEN



- OPTION FIXTURE AND SHOWER HANDLE - MÖGLICHKEIT WASSERHAHN UND DUSCHE



- OPTION CHROMOTHERAPY

- MÖGLICHKEIT CHROMOTHERAPIE

